

GO FARTHER

THE ARCTIC



WHEN THE PROMISE THAT OUR EXPEDITION SHIPS WILL GET YOU IN CLOSE PAYS OFF PERSONALLY

You know the charge you get when you come upon something wild and unexpected, something rare and beautiful? We live for those moments. We sail to the ends of the Earth to find them, to discover them anew, and conjure them for our guests.

THAT'S THE **EXHILARATION OF DISCOVERY**



Cover photo: Polar bear jumping on ice floe, Nunavut, Arctic Canada. © Ralph Lee Hopkins

This page: A polar bear and guests aboard the National Geographic Explorer in Sujoya Islands, Svalbard © Michael S. Nolan



TABLE OF CONTENTS

- 2** Where Awesome Is
- 4** All About Teamwork
- 6** Ultimate Polar Expedition Ships
- 14** National Geographic Photography
- 16** Art of Expedition Travel
- 18** What's Included

- SVALBARD & NORWAY**
- 22** Land of the Ice Bears: An In-Depth Exploration of Arctic Svalbard
- 23** Norway's Fjords & Arctic Svalbard
- 24** **NEW** Norwegian Discovery: Svalbard & the Northern Fjords
- 25** Norwegian Fjords & Scottish Isles

- ICELAND & FAROES**
- 28** A Circumnavigation of Iceland
- 29** Wild Iceland Escape
- 30** Legendary Northern Isles: Scotland, Faroes & Iceland
- 31** **NEW** Coastal Wonders of Norway, the Faroe Islands & Iceland

- GREENLAND & CANADA**
- 34** Svalbard, Iceland & Greenland's East Coast
- 35** **NEW** Iceland & Greenland: Edge of the Arctic
- 36** **NEW** East Greenland: Wild Shores of the High Arctic
- 37** **NEW** Iceland's Wild West Coast to East Greenland
- 38** **NEW** Wild Greenland Escape
- 39** **NEW** Northwest Passage: Greenland to Alaska
- 40** **NEW** Fabled Lands of the North: Greenland to Newfoundland
- 41** The Canadian Maritimes & Newfoundland

- RUSSIAN FAR EAST & ARCTIC**
- 44** **NEW** Exploring the Russian Arctic: Franz Josef Land and the Kara Sea
- 45** **NEW** Northeast Passage: An Unforgettable Voyage from Norway to Alaska
- 46** Exploring Russia's Far East & Wrangel Island
- 47** **NEW** Along the Ring of Fire: Kamchatka, Kuril Islands & Hokkaido

- 48** Extensions
- 52** Dining Aboard
- 54** *National Geographic Explorer*
- 56** *National Geographic Endurance/ National Geographic Resolution*
- 58** Reservation Information



THE ARCTIC HAS THE MONOPOLY ON MYTHIC AND MYSTERIOUS

ITS KEYWORD IS SUBTLETY, WHICH MAKES EXPLORING THERE SUCH A JOY.

Unlike Antarctica with its vast penguin colonies that require nothing of the explorer but a beach landing, the Arctic rewards patience and persistence. Standing on deck, warm in your layers, eyes trained on the distance as an infinity of pack ice slips by like time, the jubilation you feel when you, or the keenest spotter aboard, ultimately cries “bear!” is exponential. Or you’re hiking across the spare expanse of tundra on Spitsbergen’s coast, thrilled by a simple close encounter with some curious reindeer, expecting nothing more than the sight of seabirds circling overhead—and suddenly a surprise party of beluga whales cruises the beach.

Itineraries, route-lined maps—nature acknowledges neither. Heading out on any of the expeditions detailed on the following pages, as our 50+ years of polar experience has taught us, means always being willing to accept those moments when the Arctic veils or unveils its breathtaking beauty. We may find the opening to a destination fjord blocked by ice. Or a felt-thick fog might settle and slow the ship’s pace to a cautious crawl. And suddenly, like a cape-clad magician, the Arctic will—voilà!—open a lead bristling with narwhal tusks, or send the sun burning through to reveal floes studded with harp seals, as far as the eye can see—a moment of such solemn splendor no one on the entire ship can speak.



THE SKILL AND PASSIONATE
COMMITMENT OF OUR EXPEDITION
TEAM IS ROCK SOLID





THE ARCTIC MAY BE UNPREDICTABLE, ELUSIVE, OR JUST plain capricious, but the skill and passionate commitment of our expedition team is rock solid. Exploring the Arctic requires abilities our outstanding Captains and expeditions leaders (ELs) have in spades: expertise, geographic knowledge, a trove of ice charts and ‘secret’ maps from prior expedition seasons, creativity and sophisticated onboard ice-scanning technology. They’re devoted to getting us in close for extraordinary encounters with beauty, wildness, and the seldom-seen. They will defy the odds, navigating wind, wave, weather, and the vagaries of changing ice patterns to deliver exceptional experiences. And should the Arctic deny us access to a point on an itinerary, they will conjure an opportunity for you that amply rewards your intelligence and curiosity. Our expedition naturalists will do whatever it takes to ensure you unforgettable experiences: manning the spotting scopes 24 hours a day to deliver thrilling wildlife sightings, or standing waist-deep in Arctic water managing a bucking Zodiac to ensure a beach landing. They’re engaging companions, joining you at meals, as well as on walks and Zodiac and kayak forays. And the size and diversity of our expedition team ensures you a variety of specialties and personalities.

“ We had been fogged in for several days and were wondering if we’d ever get to Zodiac cruise or make a landing. Then our EL Peter Wilson informed us that we would be landing on Jan Mayen. I’d never heard of it, but was intrigued by my friends’ excitement. It proved to be an incredible experience. A stunning approach, black sand beach, with brilliant green plants and lichens over rocks. And an amazing history as a Norwegian weather station. Unexpected and very interesting.”

— MARY MACLELLAN
Guest, Greenland, 2019

- ▶ Find an account of landing at remote Jan Mayen at [expeditions.com/JanMayen](https://www.expeditions.com/JanMayen)

National Geographic Explorer is the definitive expedition ship. Beloved by many, she's the first ship to embody all our expertise & passion for exploration. Purpose-built, she takes full advantage of the bounty the planet bestows on those seeking nature's finest fare.





NATIONAL GEOGRAPHIC EXPLORER





Clockwise from far left: The ‘circle of truth,’ a Lindblad hallmark, is at the heart of lounge where guests gather for the daily expedition Recap; the big bow puts you ‘in’ the geography we’re exploring & gives photographers a prime perspective; our inventive mobile platform is key to our autonomy: we can deploy kayaks literally anywhere; our unique ‘open’ Bridge invites guests to observe navigation in action and spot wildlife along with naturalists; the chart room is a shrine for those interested in the ship’s course, as well as a warm, Bridge-adjacent respite for hot cocoa and coffee.

National Geographic Endurance and her sister ship, *National Geographic Resolution*, are like Darwin's finches, new species that reveal the process of evolution in our expedition heritage. Everything invented for and conceived aboard *National Geographic Explorer* is institutionalized here.









Clockwise from far left: Shift in Lounge design, but the circle of truth remains at the heart of it & Recap is the main event; *National Geographic Explorer* was the first ship to transport scientists and researchers to bridge the 'grant gap,' now there's a locus for them to work aboard & for guests to observe science in action; different library design, same reverence for books on all topics; a high-tech Bridge, adapted to accommodate every guest aboard, lets all share the thrill of being underway; new Marina Deck makes getting out to explore easy.

CAPTURE THE MOMENTS AT THE
HEART OF YOUR ARCTIC EXPEDITION



OUR EXPEDITION SHIPS ARE THE ONLY ONES EXPLORING THIS incomparable region with National Geographic photographers aboard every departure. These photographers, many with significant careers to their credit, have enabled countless photographers of all skill levels to take their best photos ever—but more importantly, to advance their storytelling skills to effectively tell their personal expedition story. And these pros are flanked by a Lindblad-National Geographic certified photo instructor, skilled naturalists trained to assist you with camera settings, the basics of composition, the how-tos of wildlife observation, and more, to equip beginners with new skills.



NATIONAL GEOGRAPHIC PHOTOGRAPHERS

The photo ops are endless and varied. The light, angles and compositions shift dynamically, how to best take advantage of it all? Luckily, there's a National Geographic photographer at your side and at your service to help you develop your skills. And since our certified photo instructors are naturalists as well, you'll learn about wildlife behavior at every photo op.

Some of the National Geographic photographers joining us in 2022 include: Ralph Lee Hopkins, Nick Cobbing, Karen Kasmauski, Sisse Brimberg, Evgenia Arbugaeva, Erika Larsen, David Wright, Camille Seaman, Kiliiii Yuyan, Dan Westergren, Tommy Heinrich, and Jim Richardson.



EXCLUSIVE ONBOARD GEAR LOCKER

Our partnership with acclaimed retailer B&H Photo Video enables us to offer our guests the opportunity to field test the best new lenses from Sigma, camera bodies from Canon, mirrorless cameras from Olympus and Sony and more during their expedition. Yearning to try some big glass? Looking to research a new camera purchase? Excited to aim binoculars with Swarovski optics on Arctic subjects? Once aboard, listen for announcements that B&H Gear Locker is opening—and dive in with our compliments. Take advantage of our exclusive booked guest B&H discounts pre-trip, too. Ask an Expedition Specialist, or visit expeditions.com/BHPHOTO.



THE ART OF EXPEDITION TRAVEL

SINCE THE BEGINNING OF POLAR EXPLORATION by Western explorers, artists—cartographers, photographers, and painters—have documented expeditions: the icescapes, landscapes, and wonders they discovered. Our Arctic expeditions are no exception. Photographers—guests and pros alike—always accompany our expeditions. And in 2015, Sven Lindblad invited acclaimed young artist **Zaria Forman** to travel to Antarctica aboard *National Geographic Explorer* as the expedition’s Artist-in-Residence.

She has since become the curator of the permanent polar art exhibits aboard both the *National Geographic Endurance* and *National Geographic Resolution*. The artwork she has curated and contributed to can be found throughout the ship from lounges and hallways to the cabins themselves. For a look at some of the artists, visit expeditions.com/art.





“MUSIC, LIKE WINE, HAS A TERROIR, REFLECTING THE ENVIRONMENT IN WHICH IT WAS CULTIVATED.”

Locals in Iceland and the northern isles hold fast to tradition and you'll find it infused in many different facets of their culture—from



music and dance to daily life. Our ethnomusicologist, **Jacob Edgar** has curated an exceptional line-up of musicians and songwriters whose work will fill your soul with a sense of place,

whether we're visiting tiny hamlets or bustling cities. In the Faroe Islands, you'll observe traditional Faroese chain dancing—animated, theatrical, and medieval in origin—that blends movement, rhythm, storytelling, and song.

BLAZING TRAILS TO CREATE EXTRAORDINARY OPPORTUNITIES FOR OUR GUESTS

Our itineraries are replete with opportunities to meet fascinating people and discover a deeper understanding of both their history and present lives. **Jennifer Kingsley** is a National Geographic Explorer and the Field Correspondent for Lindblad Expeditions. The trails she has blazed in Sisimiut and at Pond Inlet—visited on our *Iceland & Greenland: Edge of the Arctic* (page 35), *Wild Greenland Escape* (page 38) and *Fabled Lands* (page 40) itineraries respectively, and subsequently on story missions to the Russian Arctic—have created extraordinary opportunities for heartwarming personal encounters for our guests.







WHAT'S INCLUDED ABOARD SHIP & ASHORE

We include just about everything you have the opportunity to do as part of your expedition aboard ship and ashore.

ABOARD SHIP

- ✓ All meals and alcoholic (except certain super-premium brands) and nonalcoholic beverages
- ✓ 24-hour coffee, tea & soda & complimentary refillable water bottle
- ✓ Hors d'oeuvres & snacks during Recap
- ✓ Sauna & Fitness Center, Yoga Studio (aboard *National Geographic Endurance* & *National Geographic Resolution*)
- ✓ Fully stocked library
- ✓ The guidance and company of our expedition staff
- ✓ Gratuities to ship's crew
- ✓ Mac computer kiosks for internet access & downloading your photos
- ✓ Assistance by the onboard National Geographic photographer & certified photo instructor
- ✓ Access to the B+H Photo Gear locker with the latest gear to try out on loan
- ✓ Complimentary expedition parka/jacket

ASHORE

- ✓ Hotel accommodations as indicated by itinerary
- ✓ Guided overview of the itinerary's embarkation city
- ✓ Meals on land, as indicated in itinerary
- ✓ Special access permits, park fees, port taxes
- ✓ Transfers to and from group flights
- ✓ The expertise of our expedition staff

ACTIVITIES

- ✓ All shore activities
- ✓ Zodiac and kayak explorations
- ✓ Lectures & presentations

SVALB



ARD & NORWAY

We explore the Svalbard archipelago to observe one of the most magisterial sights on Earth: a polar bear, in its element, ranging over the pack ice, hunting for seals. Our ace spotters will do whatever it takes— from manning the spotting scopes round the clock, to disturbing your sleep with a gentle ‘bear alert’—to make sure you don’t miss the thrill of seeing a lone male, or a mother with cubs, gaze up at you with curiosity and no fear at all. Throughout Norway, we will be on the lookout for walrus, reindeer, arctic foxes, whales, gyrfalcons, and 60 species of birds. We will explore the fjord-dotted coast and walk tundras ablaze with wildflowers.

LAND OF THE ICE BEARS: AN IN-DEPTH EXPLORATION OF ARCTIC SVALBARD

11 DAYS | FROM \$11,990

Visit expeditions.com for all categories, current rates, and details.

Aboard *National Geographic Endurance* and *National Geographic Resolution*

EXPEDITION HIGHLIGHTS

- Explore Svalbard, a place of deep fjords, snowcapped mountains, massive sheets of ice, and **magnificent polar bears**.
- Experience the **dramatic landscape** via naturalist-led walks, and cruise among **beautiful icebergs** in a Zodiac or a kayak.
- Be on the lookout for a variety of arctic wildlife from **walrus and reindeer, to arctic fox, whales, and myriad birds**.
- Take advantage of the **legendary midnight sun** side-by-side with a **National Geographic photographer**.

ITINERARY AT A GLANCE

Days 1 & 2: U.S./Oslo, Norway

Day 3: Oslo/Longyearbyen/Embark

Days 4-8: Exploring Svalbard

Day 9: Longyearbyen/Disembark/Oslo

Days 10 & 11: Oslo/U.S.

EXPEDITION DETAILS

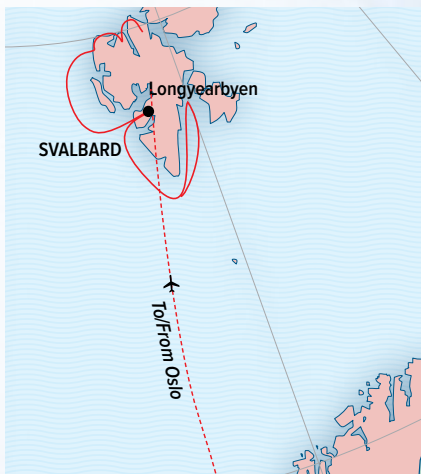
DATES: *National Geographic*

Endurance: 2022 May 31; Jun. 7, 14

2023 May 30; Jun. 6, 13, 20

National Geographic Resolution:

2022 May 22 2023 Jun. 10



SPECIAL OFFERS:

We will cover your bar tab and tips for the crew.
See page 59.



What's on the menu here?
Use your smartphone
camera to preview this
wild region.

Curious polar bear on the pack ice, Svalbard.

OPTIONAL EXTENSIONS:

Spend five days in Norway's Fjords before, or four days amid Iceland's Wonders after your Arctic adventure. Visit expeditions.com/bearx





Nordfjord, Norway; humpback whale; mother polar bear and cub; walrus hauled out on beach.

NORWAY'S FJORDS & ARCTIC SVALBARD

17 DAYS | FROM \$19,960

Visit expeditions.com for all categories, current rates, and details.

Aboard *National Geographic Endurance* and *National Geographic Resolution*

EXPEDITION HIGHLIGHTS

- Sail into Norway's spectacular fjords and explore secluded inlets and coves by kayak or Zodiac.
- Explore the rarely-visited northern fjords, threading the ice-carved narrows and standing on the bow as the Captain noses up to glacier termini.
- **Actively explore:** hike, walk, and kayak through stunning scenery. Capture your best images alongside a National Geographic photographer.
- Make for the wilds of Svalbard to see ice, bears, and Arctic wildlife.

ITINERARY AT A GLANCE

- Days 1 & 2: U.S./Bergen, Norway
- Day 2: Bergen, Norway/Embark
- Day 3: Nordfjord
- Days 4-6: Exploring the Fjords of Norway
- Day 7: Lofoten Islands
- Day 8: Tysfjorden
- Day 9: Tromsø
- Day 10: Bear Island
- Days 11-15: Exploring Svalbard
- Day 16: Longyearbyen/Disembark/Oslo
- Day 17: Oslo/U.S.

EXPEDITION DETAILS

DATES: *National Geographic Endurance:* 2022 May 3*, 18
2023 May 17

National Geographic Resolution:
2022 May 9 2023 May 28

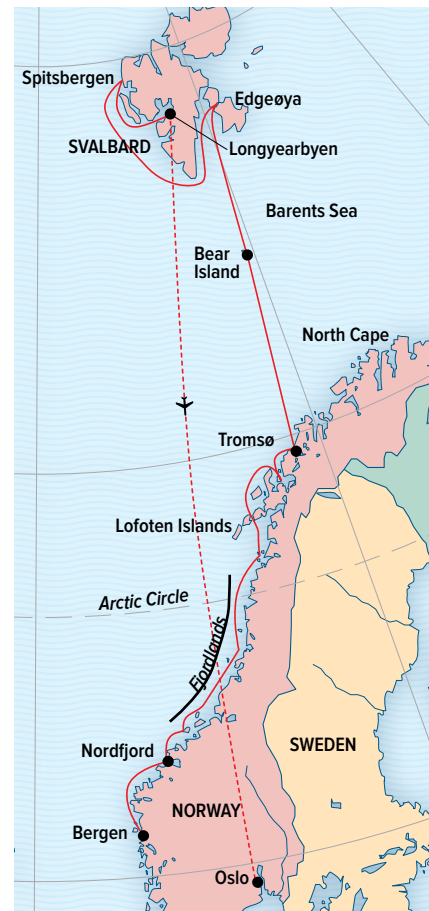
*This departure travels in reverse.

OPTIONAL EXTENSIONS:

Extend your voyage with a day in Bergen, Norway, or four days amid Iceland's Wonders. Visit expeditions.com/capeext for details.

SPECIAL OFFERS:

We will cover your bar tab and tips for the crew. See page 59.





Polar bears, Svalbard; Kittiwakes, Bear Island; Senja Island; Adult walrus hauled out at Sørøya Island.

NORWEGIAN DISCOVERY: SVALBARD & THE NORTHERN FJORDS



11 DAYS | FROM \$11,210

Visit expeditions.com for all categories, current rates, and details.

Aboard *National Geographic Endurance* and *National Geographic Resolution*

EXPEDITION HIGHLIGHTS

- Sail to the high Arctic Archipelago of Svalbard under the midnight sun in search of polar bears hunting along the pack ice.
- Zodiac cruise along the towering cliffs of Bear Island that rise straight from the sea and are home to tens of thousands of raucous seabirds.
- Capture your best images alongside a National Geographic photographer.
- On Senja Island visit pristine Ånderdalen National Park to search for reindeer, elk, red foxes, and more.
- Explore the lovely fjords of Sørøya by Zodiac and kayak, and hike on shore.

ITINERARY AT A GLANCE

- Days 1 & 2: U.S./Oslo, Norway
- Day 3: Oslo/Longyearbyen/Embark
- Days 4-6: Exploring Svalbard
- Day 7: Bear Island
- Day 8: Sørøya Island
- Day 9: Senja Island
- Day 10: Tromsø/Disembark/Oslo
- Day 11: Oslo/U.S.

EXPEDITION DETAILS

DATES: *National Geographic Endurance:*

2022 Jun. 21 2023 Jun. 27

National Geographic Resolution:

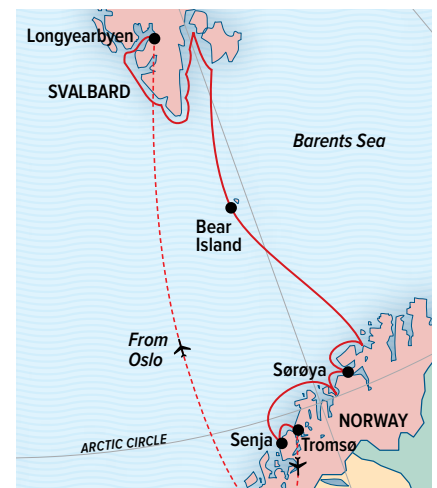
2022 May 29

OPTIONAL EXTENSION:

Spend five days in rich landscapes of Norway's fjords before your voyage. Visit expeditions.com/nordiscovery-ext for details.

SPECIAL OFFERS:

We will cover your bar tab and tips for the crew. See page 59.



NORWEGIAN FJORDS & SCOTTISH ISLES



10 DAYS | FROM \$11,990

Visit expeditions.com for all categories, current rates, and details.

Aboard *National Geographic Resolution*

EXPEDITION HIGHLIGHTS

- Go aboard the new *National Geographic Resolution* and sail across the North Sea in the wake of early Viking explorers, learning the region's dramatic history.
- Glide beneath the dramatic cliffs of the second-largest fjord in Norway, Hardangerfjord.
- Explore the towering cliffs of Noss, a nature reserve that harbors thousands of seabirds including puffins, guillemots, and kittiwakes.
- See the U.K.'s northernmost lighthouse, Muckle Flugga, at Unst and capture your best images alongside a National Geographic photographer.

ITINERARY AT A GLANCE

Days 1 & 2: U.S./Bergen, Norway/
Embark

Day 3: Hardangerfjorden

Day 4: Hidra/At Sea

Day 5: Shetland Islands, Scotland/Isles
of Noss/Lerwick

Day 6: Unst

Days 7 & 8: Orkney Islands

Day 9: Aberdeen

Day 10: Edinburgh/Disembark/U.S.

EXPEDITION DETAILS

DATES: 2022 Apr. 23; May 1* 2023

May 2*

*These departures travel in reverse.

SPECIAL OFFERS:
We will cover your bar tab and tips for the crew.
See page 59.

OPTIONAL EXTENSIONS:

Extend your voyage in Norway's fjords;
Bergen, Norway; or Edinburgh, Scotland.
Visit expeditions.com/isles-ext for details.



For itinerary details, prices, staff,
and special guests, visit expeditions.com/isles

Ring of Brodgar.







ICELAND & FAROES

We are focused on offering an uncommon experience of Iceland, including an 11-day comprehensive circumnavigation of Iceland by ship—featuring iconic sites and sights, from the Blue Lagoon and Goðafoss, the waterfall of the gods, and well beyond. See the terrain diversity and wildness at the heart of Iceland, and meet interesting local leaders. We invite experts—in politics, art, geology, and economics—aboard for stimulating exchanges that give you incredible insight. Then, there's the music: Iceland's music scene is known the world over; and our ethnomusicologist, Jacob Edgar, has curated exclusive performances for us aboard and ashore. Or opt for our shorter, 6-day escape to match your interests by land and sea. The Viking heritage, overlaid by a cosmopolitan gloss in Iceland, is readily apparent in the Faroes, where the genetic stamp is strong: many of the locals look like they just arrived on a Viking longboat. And where most landscapes have the timeless, sea-facing sweep of a just established Viking settlement.



Goðafoss or waterfall of the Gods; Hallgrímskirkja Cathedral, Reykjavík; photographer on Flatey Island; geothermal valley Leirhnjúkur, in Lake Mývatn region.

A CIRCUMNAVIGATION OF ICELAND

11 DAYS | FROM \$11,920

Visit expeditions.com for all categories, current rates, and details.

Aboard *National Geographic Explorer* and *National Geographic Resolution*

EXPEDITION HIGHLIGHTS

- Experience all of Iceland's **geological manifestations**: glaciers, geysers, thundering waterfalls, immense cliffs, geothermal springs, boiling mud pots, and rock- and lava-scapes of unearthly beauty.
- Actively explore Iceland's wild western coast; Siglufjörður in the north; the rarely visited rugged east coast; and the **Westman Islands**, one of the planet's youngest archipelagos.
- Explore the **incredible tundra-covered landscape** in Iceland's dramatic Westfjords and see a volcanic island that formed in 1963.
- Sail into dramatic fjords and marvel at the thundering **Goðafoss Waterfall** and the bubbling mud pools at Mývatn.
- **Experience traditional Icelandic life** from the once-booming herring industry to eiderdown production.

ITINERARY AT A GLANCE

Days 1 & 2: U.S./Reykjavík, Iceland/
Embark

Day 3: Flatey Island

Day 4: Exploring Northwestern Iceland

Day 5: Ísafjörður

Day 6: Siglufjörður & Akureyri

Day 7: Lake Mývatn & Húsavík

Day 8: Exploring Northeast Iceland

Day 9: Djúpivogur

Day 10: Islands of Heimaey & Surtsey,
Westman Islands

Day 11: Reykjavík/Disembark/U.S.

EXPEDITION DETAILS

DATES: *National Geographic Explorer*: 2022 Jul. 12, 21 2023 Jul. 11, 20
National Geographic Resolution: 2022 Jun. 20 2023 Jul. 2



SPECIAL OFFERS:

We will cover you bar tab and tips for the crew.
See page 59.

OPTIONAL EXTENSIONS:

Don't miss a moment: take a day before to tour the Golden Circle or 3 days after exploring the Snæfellsnes Peninsula.
Visit expeditions.com/iceland-ext

WILD ICELAND ESCAPE

6 DAYS | FROM \$6,580

Visit expeditions.com for all categories, current rates, and details.

Aboard *National Geographic Resolution*

EXPEDITION HIGHLIGHTS

- Actively explore Iceland's pristine fjords and fascinating tundra on daily hikes, Zodiac cruises, and more while accompanied by a dedicated team of naturalists.
- Encounter evidence of volcanic activity as we hike over cooled lava fields and view Iceland's newest isle, Surtsey.
- Discover the rich biodiversity of the remote Westfjords, spotting nesting puffins and gannets along the coast, and watching for humpback and minke whales in the surrounding waters.

ITINERARY AT A GLANCE

Days 1 & 2: U.S./Reykjavik, Iceland/
Embark

Day 3: Djúpavík

Day 4: Arnafjörður

Day 5: Islands of Surtsey & Heimaey,
Westman Islands

Day 6: Reykjavik, Iceland/
Disembark/U.S.

SPECIAL OFFERS:

We will cover your bar tab and tips for the crew.
See page 59.

EXPEDITION DETAILS

DATES: 2022 Jun. 29 2023 Jul. 11, 15

OPTIONAL EXTENSIONS:

Choose your own adventure on one of 3 optional trip extensions: tour Iceland's Golden Circle, Snæfellsnes Peninsula, or Volcanic Northeast. Visit expeditions.com/wildiceext for details.

For itinerary details, prices, and staff, visit expeditions.com/iceescape



Dynjandi waterfall, Westfjords.

LEGENDARY NORTHERN ISLES: SCOTLAND, FAROES & ICELAND

14 DAYS | FROM \$12,130

Visit expeditions.com for all categories, current rates, and details.

Aboard *National Geographic Explorer*

EXPEDITION HIGHLIGHTS

- Encounter **Shetland ponies** roaming verdant landscapes.
- Go back in time at **Skara Brae**, a 5,000-year-old stone-slab village on **Orkney** and see the mysterious standing stones of the **Ring of Brodgar**.
- Walk with a historian through **Jarlshof archaeological site**, a complex of ancient settlements spanning 4,000 years of human history.
- Meet the welcoming islanders who call the scenic **Faroe Islands** home.
- Observe incredible **birdlife**—massive puffin colonies in the Faroes and Grimsey, and on the Cliffs of Noss, thousands of northern gannets.
- Experience a near circumnavigation of the **geologic wonders of Iceland**.

ITINERARY AT A GLANCE

Days 1-2: U.S./Bergen, Norway/Embark

Day 3: Orkney, Scotland

Day 4: Shetland

Days 5-7: Exploring the Faroe Islands

Day 8: Djúpivogur, Iceland

Day 9: At Sea/Grimsey

Day 10: Lake Mývatn/Akureyri

Day 11: Ísafjörður

Day 12: Flatey Island

Day 13: Surtsey & Heimaey, Westman Islands

Day 14: Reykjavik/Disembark/U.S.

EXPEDITION DETAILS

DATE: 2022 Jun. 30 2023 Jun. 29



SPECIAL OFFERS:

We will cover your bar tab and tips for the crew.
See page 59.

For itinerary details, prices, and staff, visit expeditions.com/legend

Traditional Faroese turf-roofed homes, Saksun, Faroe Islands.



Photographing Arctic Terns, Flatey Island; A humpback flukes in front of a zodiac cruise in Isafjordur; Norway Panoramic view of Lofoten Islands; Faroe Islands.

COASTAL WONDERS OF NORWAY, THE FAROE ISLANDS & ICELAND

NEW

17 DAYS | FROM \$22,470

Visit expeditions.com for all categories, current rates, and details.

Aboard *National Geographic Resolution*

EXPEDITION HIGHLIGHTS

- Sail into Norway’s spectacular fjords and explore **secluded inlets and coves by kayak or Zodiac**.
- Encounter the **Bronze Age ruins and Viking longhouses of Jarlshof**, a prehistoric settlement in the Shetlands.
- Discover the unique culture of the **Faroe Islands**, where residents cling proudly to their Viking heritage.
- Observe nesting seabirds in dramatic settings amid the towering peaks of the **Lofoten islands**.
- Sail past the dramatic sea cliffs of the Faroes to see **cliff-nesting puffins, gannets, and northern fulmars**. Capture your **best images alongside a National Geographic photographer**.

ITINERARY AT A GLANCE

Days 1 & 2: U.S./Oslo, Norway

Day 3: Oslo/Tromsø/Embark

Day 4: Tysfjorden

Day 5: Lofoten Islands

Days 6 & 7: Exploring the Fjords of Norway

Day 8: At Sea/Shetland Islands, Scotland

Day 9: Lerwick/Foula

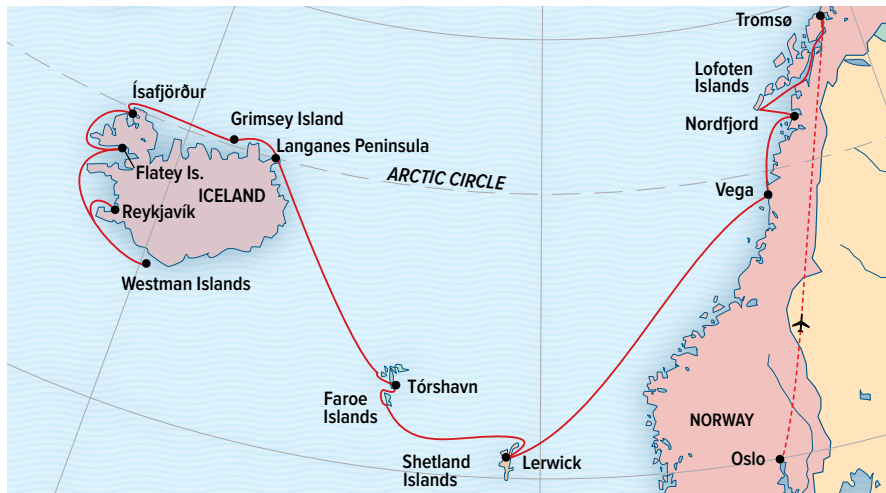
Days 10 & 11: Exploring the Faroe Islands

Days 12 & 13: At Sea/Seyðisfjörður, Iceland/Grimsey

Days 14 & 15: Ísafjörður/Flatey Island

Day 16: Westman Islands

Day 17: Reykjavík/Disembark/U.S.



EXPEDITION DETAILS

DATE: 2022 Jun. 5

SPECIAL OFFERS:

We will cover your bar tab and tips for the crew. See page 59.



GREENLAND & CANADA

This is true polar exploration—whether it's attempting to penetrate the massive ice of east Greenland to reach Scoresbysund, marveling at the big ice of West Greenland, or cruising among the towering icebergs of UNESCO World Heritage-designated Ilulissat Icefjord. We go high, deep and far into the Canadian Arctic lured by the chance to spot the mythic species: muskox, beluga whales, numerous polar bears and possible even the elusive narwhal.

And to log the exhilarating sightings of polar bears, walrus, bearded and ringed seals, humpback whales and more, that our keen-eyed spotters reliably deliver each year. Our guests have enjoyed simply spectacular sightings here, and cultural rewards as well. Hike the tundra, meet locals, and search for unique wildlife that congregate along the scenic shores of Greenland, Baffin Island, Newfoundland and Labrador—where, in addition to the natural splendors of the sea and land, we trace the lineage of Arctic exploration and migration, from the ancient Vikings to the Acadians.



Zodiac cruise at Scoresbysund; polar bear on ice; walrus; Jan Mayen.

SVALBARD, ICELAND & GREENLAND'S EAST COAST

17 DAYS | FROM \$20,610

Visit expeditions.com for all categories, current rates, and details.

Aboard *National Geographic Resolution*

EXPEDITION HIGHLIGHTS

- Explore **Arctic Svalbard**, one of the most reliable places on the planet to observe majestic **polar bears** in their natural habitat, on the sea ice.
- Discover the Arctic wilderness of **East Greenland** with its massive fjords and icebergs and weather permitting, meet the Inuit community in **Scoresbysund**.
- Cap the expedition by navigating **Iceland's wild western coast**, from scenic Ísafjörður and Vigur to vibrant Reykjavík.

ITINERARY AT A GLANCE

DAYS 1 & 2: U.S. / Oslo, Norway

DAY 3: Oslo / Longyearbyen / Embark

DAYS 4-16: Exploring Svalbard, Greenland & Iceland

DAY 17: Reykjavík / Disembark / Home



EXPEDITION DETAILS

DATE: 2023 June 17

SPECIAL OFFERS:

We will cover your bar tab and tips for the crew. See page 59.

ICELAND & GREENLAND: EDGE OF THE ARCTIC

19 DAYS | FROM \$20,370

Visit expeditions.com for all categories, current rates, and details.

Aboard *National Geographic Explorer*



EXPEDITION HIGHLIGHTS

- Hike the dramatic **Dynjandi Waterfall** in Iceland's remote **Westfjords peninsula**, and visit a farm that produces eiderdown.
- Explore Hvalsey and Brattahlíð, **10th-century Viking settlements** founded by Eric the Red and his family in Greenland, and see the incredible **Qilakitsoq mummies**, preserved by freezing temperatures for some 500 years.
- Cruise among the **dazzling icebergs calved by the Ilulissat Icefjord** and encounter impressive tidewater glaciers in West Greenland.
- Experience **local culture** through visits to fishing villages and longhouses, folk performances, and tasting tours of **traditional Greenlandic and Icelandic foods**.
- Capture your **best images alongside a National Geographic photographer**.

ITINERARY AT A GLANCE

Days 1 & 2: U.S./Reykjavik, Iceland/
Embark

Day 3: Flatey Island

Day 4: Arnarfjörður/Dynjandi/Vigur

Day 5: Ísafjarðardjúp

Day 6: Crossing the Denmark Strait

Day 7: Exploring East Greenland

Day 8: Prins Christian Sund &
Nanortalik

Day 9: Hvalsey Ruins & Qaqortoq

Day 10: Eriksfjörð & Brattahlíð

Day 11: Nuuk

Day 12: Kangaamiut and Evighed Fjord

Day 13: Sisimut

Days 14 & 15: Ilulissat & Disko Bay

Day 16: Uummannaq & Qilakitsoq

Day 17: Ataneq Fjord

Days 18 & 19: Kangerlussuaq/
Disembark/Reykjavik, Iceland/
Keflavik/U.S.

EXPEDITION DETAILS

DATES: 2022 Jul. 30
2023 Jul. 29

SPECIAL OFFERS:
We will cover your bar tab and tips for the crew.
See page 59.

For itinerary details, prices, and staff, visit expeditions.com/arcticedge

OPTIONAL EXTENSIONS:

Don't miss a moment: take a day before to tour the Golden Circle or 3 days before exploring the Volcanic Northeast. Visit expeditions.com/arcticedge-ext



Iceberg arch.

EAST GREENLAND: WILD SHORES OF THE HIGH ARCTIC

20 DAYS | FROM \$25,740

Visit expeditions.com for all categories, current rates, and details.

Aboard *National Geographic Endurance*



EXPEDITION HIGHLIGHTS

- Venture all the way north to **Northeast Greenland National Park** in search of the Arctic's iconic wildlife—**polar bears, whales, muskoxen**, and more.
- Sail into Norway's spectacular fjords and **explore secluded inlets and coves** by kayak or Zodiac.
- Call at the **seldom-visited Jan Mayen Island**, where the only residents man a remote weather outpost and have this **northernmost volcano** all to themselves.
- Conditions permitting, see the **spectacular Northern Lights** as we sail the remote coasts of Iceland and Greenland. Capture your **best images alongside a National Geographic photographer**.
- Visit Iceland's colorful villages to see contemporary life, hike over geologically **recent volcanic flows**, and soak in the country's **iconic hot springs**.

ITINERARY AT A GLANCE

- Days 1 & 2: U.S./Oslo, Norway
- Day 3: Oslo/Tromsø/Embark
- Day 4: Tysfjorden
- Days 5 & 6: Nordfjord/Svartisen
- Day 7: Lofoten Islands
- Days 8 & 9: At Sea/Jan Mayen, Norway
- Days 10-12: East Greenland, Scoresbysund/Exploring
- Days 13-16: Exploring Northeast Greenland National Park
- Day 17: Northwest Iceland
- Day 18: Flatey Island
- Day 19: Westman Islands
- Day 20: Reykjavík/Disembark/U.S.

EXPEDITION DETAILS

DATES: 2022 Sep. 2 2023 Sep. 8

OPTIONAL EXTENSIONS:

Extend your voyage in Norway's fjords, amid Iceland's Wonders, or around Iceland's Golden Circle. Visit expeditions.com/green-ext for details.

SPECIAL OFFERS:
We will cover your bar tab and tips for the crew. See page 59.

For itinerary details, prices, and staff, visit expeditions.com/eastgreenland



Zodiac cruising off East Greenland.





Dynjandi waterfall, Westfjords of Iceland; Flatey Island; Aurora borealis; Polar bear on ice floe of Scoresbysund.

ICELAND'S WILD WEST COAST TO EAST GREENLAND

13 DAYS | FROM \$14,150

Visit expeditions.com for all categories, current rates, and details.

Aboard *National Geographic Endurance*



EXPEDITION HIGHLIGHTS

- Discover the wild west coast of Iceland with its dramatic fjords, remote communities, and majestic waterfalls.
- Explore the **largest national park in the world**—Northeast Greenland National Park—and search for polar bears, muskoxen, whales, and more.
- Sail into Scoresbysund, ice permitting, the **world's largest and longest fjord system** and home to a remote Inuit community.
- Learn how to capture **northern lights displays**, conditions permitting, with our National Geographic photographer by your side.

ITINERARY AT A GLANCE

Days 1 & 2: U.S./Reykjavik, Iceland/
Embark

Day 3: Flatey Island, Iceland

Day 4: Crossing the Denmark Strait

Days 5-10: Exploring Scoresbysund
and NE Greenland

Days 11 & 12: Crossing the Denmark
Strait/Exploring the Westfjords, Iceland

Day 13: Reykjavik/Disembark/U.S.



EXPEDITION DETAILS

DATES: 2022 Sep. 20 2023 Sep. 26

SPECIAL OFFERS:

We will cover your bar tab and tips for the crew.
See page 59.

OPTIONAL EXTENSIONS:

Don't miss a moment: take a day before to tour the Golden Circle or 3 days after exploring the Snæfellsnes Peninsula or the Volcanic Northeast. Visit expeditions.com/greenice-ext



Hiking in the shadow of the Ilulissat Icefjord; kayaking near Qaqortoq; exploring the ice by Zodiac; exploring the colorful town Sisimiut.

WILD GREENLAND ESCAPE

6 DAYS | FROM \$8,220

Visit expeditions.com for all categories, current rates, and details.

Aboard *National Geographic Resolution*

NEW

EXPEDITION HIGHLIGHTS

- Explore the dramatic coastline of West Greenland by water and on foot, kayaking stunning fjords, and hiking across the tundra while on the lookout for wildlife.
- Delve into Greenlandic culture and history at the outstanding museum of Sisimiut and meet with residents of Uummannaq Island to learn about everyday life.
- Capture your best images alongside a National Geographic photographer.
- Hike the Sermermiut Valley to a promontory overlooking the mouth of the Ilulissat Icefjord and take in extraordinary views of the iceberg-choked bay.
- Visit the archaeological site at Qilakitsoq, where remarkably well-preserved 500-year-old mummies were found in 1972.

ITINERARY AT A GLANCE

Day 1: U.S./Kangerlussuaq, Greenland/
Embark

Day 2: Greenland's West Coast &
Sisimiut

Day 3: Ilulissat & Disko Bay

Day 4: Uummannaq/Qilakitsoq

Day 5: Ataneq Fjord

Day 6: Kangerlussuaq/Disembark/U.S.

EXPEDITION DETAILS

DATES: 2022 Jul. 7, 12

SPECIAL OFFERS:

We will cover your bar tab and tips for the crew.
See page 59.



NORTHWEST PASSAGE: GREENLAND TO ALASKA

22 DAYS | FROM \$34,540

Visit expeditions.com for all categories, current rates, and details.



Aboard *National Geographic Resolution*

EXPEDITION HIGHLIGHTS

- Sail aboard our new, state-of-the-art polar ship to the northernmost coastlines of the planet, where few have explored before.
- Venture into the fabled Northwest Passage and learn dramatic stories of explorers and adventurers who sought this magnificent, icy frontier.
- Glide between soaring icebergs at the mouth of Greenland's Ilulissat Icefjord, a UNESCO World Heritage site.
- Visit one of Canada's "jewels of the north": Pond Inlet, a small Inuit community known for soapstone carvings.
- Observe polar bears, walrus, ringed seals, belugas, and bowhead whales. Capture your best images alongside a National Geographic photographer.
- Meander through the remains of historic dwellings on Herschel Island; a scattered mixture from the Inuvialuit people and the once-booming whaling industry.

ITINERARY AT A GLANCE

Day 1: U.S./Kangerlussuaq, Greenland/
Embark

Day 2: Greenland's West Coast and
Sisimiut

Day 3: Disko Bay & Ilulissat

Days 4 & 5: Exploring East Baffin Bay,
Nunavut, Canada

Days 7-16: Exploring the Northwest
Passage

Days 17: At Sea

Day 18: Herschel Island, Yukon Territory

Days 19-21: At Sea

Day 22: Nome, Alaska, U.S./Disembark/
Anchorage



EXPEDITION DETAILS

DATES: 2022 Jul. 17 2023 Jul. 24

For itinerary details, prices, and staff, visit expeditions.com/nwpassage

SPECIAL OFFER:
We will cover your bar tab and crew tips. See page 59.



Polar bear, Northwest Passage.



Polar bear reflection; L'Anse aux Meadows; Torngat Mountains National Park; humpback whale dives near Ilulissat.

FABLED LANDS OF THE NORTH: GREENLAND TO NEWFOUNDLAND

17 DAYS | FROM \$17,010

Visit expeditions.com for all categories, current rates, and details.

Aboard *National Geographic Explorer*

EXPEDITION HIGHLIGHTS

- Glide between soaring icebergs at the mouth of the Ilulissat Icefjord, a UNESCO World Heritage site.
- Wander amid the ruins of the 11th-century Viking village of L'Anse aux Meadows.
- Meet Inuit artisans and learn about their carving and weaving traditions.
- Search for wildlife, from whales, walruses, and polar bears to black bears and woodland caribou.
- Explore untamed coasts, discovering spectacular fjords and cliffs on foot and by kayak and Zodiac.

ITINERARY AT A GLANCE

Days 1 & 2: U.S./Keflavík, Iceland

Day 3: Reykjavík/Kangerlussuaq, Greenland/Embark

Day 4: Sisimiut

Day 5: Disko Bay & Ilulissat

Day 6: At Sea/Davis Strait

Day 7: Pangnirtung & Kerkerton Is., Nunavut, Canada

Day 8: Hall Peninsula, Baffin Island

Day 9: Lower Savage & Button Islands

Day 10: Eclipse River

Days 11-14: Exploring the Torngat Mountains & the Labrador Coast

Day 15: L'Anse aux Meadows

Day 16: Northern Newfoundland

Day 17: St. John's/Disembark/U.S.

EXPEDITION DETAILS

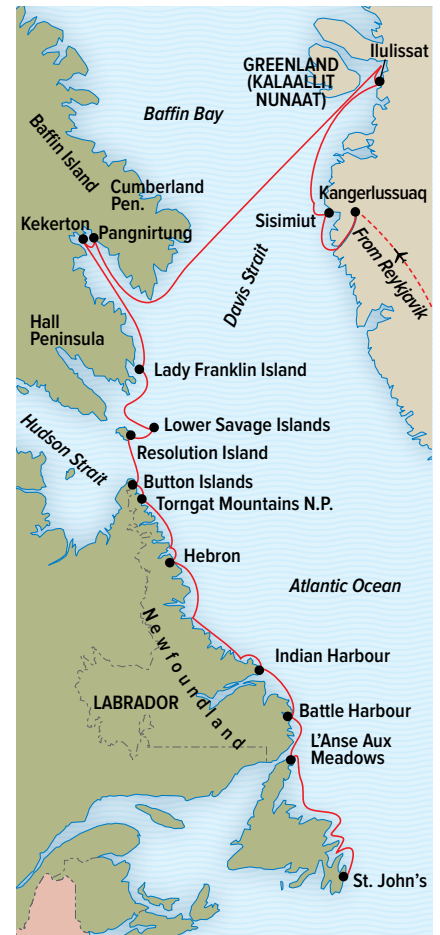
DATES: 2022 Aug. 14 2023 Aug. 13

OPTIONAL EXTENSIONS:

Explore Iceland's wonders over four days or one day at the Golden Circle and the Blue Lagoon. Visit expeditions.com/fabled-ext

SPECIAL OFFERS:

We will also cover your bar tab and tips for the crew. See page 59.



THE CANADIAN MARITIMES & NEWFOUNDLAND

10 DAYS | FROM \$10,150

Visit expeditions.com for all categories, current rates, and details.

Aboard *National Geographic Explorer*

EXPEDITION HIGHLIGHTS

- Circumnavigate Newfoundland and visit coastal villages and small islands, like Cape Breton.
- Explore **two UNESCO sites**: Gros Morne National Park and the 11th-century Viking village at L'Anse aux Meadows.
- Discover the dunes, sandstone cliffs, and Acadian culture of the **Îles de la Madeleine**.
- Explore the intriguing red cliffs and strange tabletop formations at **Gros Morne National Park**.

ITINERARY AT A GLANCE

Day 1: U.S./St. John's, Newfoundland & Labrador, Canada/Embark

Day 2: St. Pierre, France

Day 3: Louisbourg & Baddeck, Cape Breton Island, Nova Scotia

Day 4: Îles de la Madeleine, Quebec

Day 5: Exploring the Gulf of St. Lawrence

Day 6: Gros Morne National Park

Day 7: Red Bay

Day 8: L'Anse aux Meadows

Day 9: Exploring Northeastern Newfoundland

Day 10: St. John's/Disembark/U.S.



EXPEDITION DETAILS

DATES: 2022 Aug. 30; Sep. 8
2023 Aug. 29; Sep. 7

SPECIAL OFFERS:

We will cover your bar tab and tips for the crew.
See page 59.

OPTIONAL EXTENSION:

Discover the rewards of lingering post-expedition at Newfoundland's gorgeous, gracious Fogo Island Inn. Visit expeditions.com/fogoinn

For itinerary details, pricing, and staff, visit expeditions.com/maritimes



Explore Gros Morne National Park, Newfoundland, a UNESCO World Heritage site.

RU



RUSSIAN FAR EAST & ARCTIC

This is epic: our expeditions into the Russian Arctic and Far East offer both firsts and foremost—experiences like nowhere else on Earth.

Join us as we head into parts previously unknown to all but a very few of our team. Feel the excitement from the collaboration between our Captain and expedition leader, as well as the ship's officers and naturalists. Enter the most tempting channels, bays, and inlets, in the hopes of spotting a variety of species—including the majestic polar bear on Wrangel Island's remote shores. Make landfall in the most promising locations and make exhilarating discoveries.

EXPLORING THE RUSSIAN ARCTIC: FRANZ JOSEF LAND & THE KARA SEA



24 DAYS | FROM \$27,210

Visit expeditions.com for all categories, current rates, and details.

Aboard *National Geographic Endurance*

EXPEDITION HIGHLIGHTS

- Sail aboard our new, state-of-the-art polar ship to the **northern reaches of the planet**, and ply the icy waters of the Kara Sea, only navigable for a few months of the year.
- Set foot on the **world's northernmost archipelago**, Franz Josef Land, following in the path of a 2013 expedition by National Geographic's Pristine Seas team.
- Explore along the sandy shores of Ostrov Isachenko, part of **Russia's Great Arctic State Nature Reserve**, and watch for polar bears from the ship's deck.
- Learn about indigenous culture in Murmansk, Russia, and take a **guided tour of the world's first nuclear-powered icebreaker**.

ITINERARY AT A GLANCE

Days 1-3: U.S./Oslo, Norway/Tromsø
Embark

Day 4: Norway's Fjords

Day 5: Murmansk, Russia

Days 6-7: At Sea

Days 8-10: Cruising Barents Sea and
Novaya Zemlya

Days 11-12: Exploring the Kara Sea

Days 13-15: Severnaya Zemlya

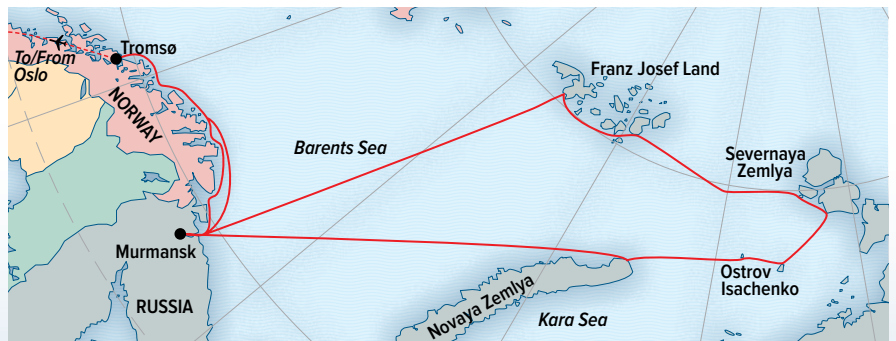
Days 16-19: Franz Josef Land

Day 20: At Sea

Day 21: Murmansk

Day 22: Norway's Fjords

Days 23-24: Tromsø/Disembark/
Oslo/U.S.



EXPEDITION DETAILS

DATES: 2022 Jun. 28 2023 Jul. 4

Note: A Russian tourist visa is required.

SPECIAL OFFERS:

We will cover your bar tab and crew tips.
See page 59.

For itinerary details, prices, and staff, visit expeditions.com/franz

OPTIONAL EXTENSIONS:

Spend five days in Norway's Fjords. Visit expeditions.com/franz-ext



Atlantic Walrus and blue iceberg, Franz Josef Land.



Leaping polar bear; wooden domes, Murmansk; Norwegian houses along the coast; walrus hauled out on ice floe, Franz Josef Land.

NORTHEAST PASSAGE: AN UNFORGETTABLE VOYAGE FROM NORWAY TO ALASKA



26 DAYS | FROM \$36,990

Visit expeditions.com for all categories, current rates, and details.

Aboard *National Geographic Endurance*

EXPEDITION HIGHLIGHTS

- Thrill at remote Siberian shores and far northern archipelagos—including **Franz Josef Land**, **Severnaya Zemlya**, the vast and barely explored **New Siberian Islands**, and **Wrangel Island**—little changed since the days of Nordenskiöld, Amundsen, and intrepid explorers of the last century.
- Join us as we navigate wind, wave, and weather, slaloming the lines of longitude in search of the wildlife and wonders hidden within this little-known passage.

ITINERARY AT A GLANCE

Days 1-2: U.S./Oslo, Norway

Day 3: Oslo/Tromsø/Embark

Day 4: Norway's Fjords

Day 5: Murmansk

Days 6-25: Exploring the Russian High Arctic, Siberian coast, and Russian Far East

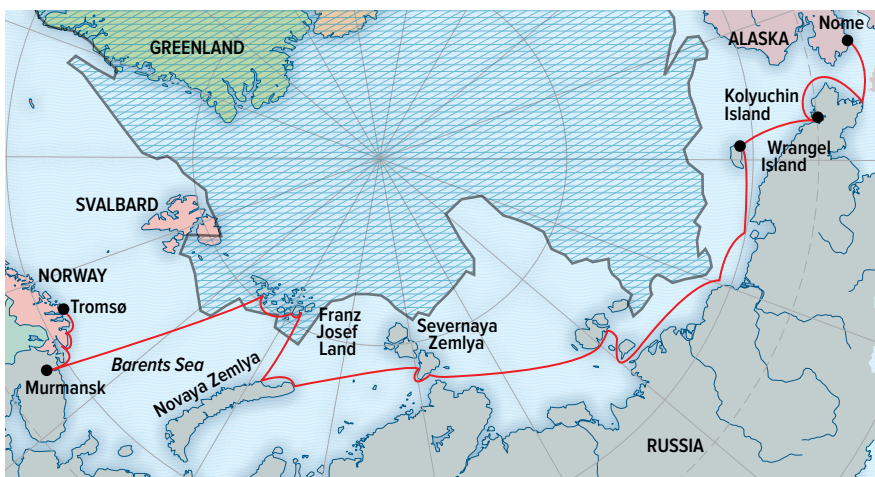
Day 26: Disembark/Nome, Alaska/ Anchorage/U.S.

EXPEDITION DETAILS

DATES: 2022 Jul. 18; Aug. 11

2023 Jul. 24; Aug. 16

Note: A Russian tourist visa is required.



SPECIAL OFFERS:

We will cover your bar tab and crew tips.
See page 59.



Polar bears; Lorino Village; lighthouse monument, Cape Dezhnev; Pacific walrus, Kolyuchin Island.

EXPLORING RUSSIA'S FAR EAST & WRANGEL ISLAND

13 DAYS | FROM \$20,120

Visit expeditions.com for all categories, current rates, and details.

Aboard *National Geographic Resolution*

EXPEDITION HIGHLIGHTS

- Discover the **UNESCO World Heritage site, Wrangel Island Reserve**, home to a high density of polar bear dens, Pacific walrus, musk oxen, arctic fox, gray whales, and 100 migratory bird species.
- Zodiac cruise the coastline of Kolyuchin Island, a protected region with tremendous wildlife such as puffins, guillemots, and walrus.
- Visit **Cape Dezhnev**, the farthest point east in Russia.
- See **gray whales in their Northern feeding grounds** in the Chukchi & Bering Seas.
- Experience **meaningful cultural exchanges** across the entire breadth of Beringia.

ITINERARY AT A GLANCE

Day 1: Anchorage, Alaska, U.S./Nome/ Embark

Day 2: Provideniya, Russian Federation

Day 3: Cape Dezhnev & Inchoun Village

Day 4: Kolyuchin Island & Kolyuchin Bay

Days 5-8: At Sea/Wrangel Island

Days 9 & 10: At Sea/Lorino Village

Day 11: Chukotka Coast/Provideniya

Day 12: At Sea/Crossing the Bering Strait

Day 13: Nome, Alaska, U.S./Disembark/ Anchorage



EXPEDITION DETAILS

DATE: 2022 Aug. 7

Note: A Russian tourist visa is required.

SPECIAL OFFERS:

BE OUR GUEST. Take advantage of a complimentary pre-voyage hotel night in Anchorage. We will also cover your bar tab and tips for the crew. See page 59.

OPTIONAL EXTENSIONS:

Explore the Alaska wilderness at Tutka Bay Lodge or Winterlake Lodge. Call or visit expeditions.com/alaskalodges for details.

ALONG THE RING OF FIRE: KAMCHATKA, KURIL ISLANDS & HOKKAIDO



25 DAYS | FROM \$36,190

Visit expeditions.com for all categories, current rates, and details.

Aboard *National Geographic Resolution*

EXPEDITION HIGHLIGHTS

- Witness a profusion of rare wildlife from the ship's deck or aboard a nimble Zodiac: whiskered auklets, northern fur seals, Pacific walrus, sea otters, brown bears, Steller's sea eagles, and more.
- Navigate among the remote and mostly uninhabited Kuril Islands; marvel at their fascinating geology as you trek the tundra-covered volcanic slopes and Zodiac into a caldera.
- In Hokkaido, spot the sacred red-crowned crane on a visit to the wetlands of Kushiro, and discover the unique culture and complex history of Japan's indigenous Ainu people.
- Immerse yourself in vibrant Tokyo where ancient history and sacred traditions live in harmony with modern-day culture.

ITINERARY AT A GLANCE

Day 1: Anchorage, Alaska, U.S./Nome/ Embark

Day 2: At Sea/Crossing the Bering Strait

Day 3: Provideniya, Russian Federation

Days 4-7: Chukotka & Koryak Coasts

Days 8 & 9: At Sea/Commander Islands

Days 10 & 11: Chazhma & Zhupanova Rivers

Day 12: Petropavlovsk-Kamchatskiy

Days 13-16: Kuril Islands

Days 17 & 18: At Sea/Korsakov, Russian Federation

Day 19: Abashiri, Japan/Shiretoko National Park

Day 20: Kushiro Shitsugen National Park/ Akan Mashu National Park

Days 21 & 22: Murooran/At Sea

Days 23-25: Niigata/Disembark/Tokyo/U.S.



EXPEDITION DETAILS

DATES: 2022 Aug. 19 2023 Aug. 13

Note: A Russian tourist visa is required.

SPECIAL OFFERS:

BE OUR GUEST: Take advantage of a complimentary pre-voyage hotel night in Anchorage on the 2022 voyage. See website or call for 2023 details. We will also cover your bar tab and crew tips. See page 59.

For itinerary details, prices, staff, and special guests, visit expeditions.com/kuril



Yankicha Island.

EXTENSIONS

PRE/POST-ICELAND

ICELAND: GO DEEPER IN THE LAND OF FIRE & ICE

Customize your Iceland expedition by adding an inland adventure to your coastal exploration.

[PRE- OR POST-VOYAGE EXTENSION]

REYKJAVIK'S GOLDEN CIRCLE & BLUE LAGOON

1 DAY/1 NIGHT | FROM \$1,590 PER PERSON, DOUBLE OCCUPANCY

Soak in the surreal Blue Lagoon, and explore the famed Golden Circle's boiling pools and geysers with a local guide.

ADD IT BEFORE > *A Circumnavigation of Iceland; Wild Iceland Escape; Iceland and Greenland: Edge of the Arctic; Fabled Lands of the North or Iceland's Wild West Coast.*

ADD IT AFTER > *Legendary Northern Isles or East Greenland: Wild Shores.*



[POST-VOYAGE EXTENSION]

SNÆFELLSNES: FIRE & ICE

3 DAYS/2 NIGHTS | FROM \$3,480 PER PERSON, DOUBLE OCCUPANCY

Walk into the aquamarine ice cave of Langjökull Glacier and hike through a lava tube in Víðgelmir. Drive and hike along parts of the coastline of the stunning Snæfellsnes National Park including black pebble beaches, basalt sea stack columns, and perhaps a glimpse of the imposing Snæfellsjökull Mountain.

ADD IT AFTER > *Wild Iceland Escape; Iceland's Wild West Coast or A Circumnavigation of Iceland*



[PRE- OR POST-VOYAGE EXTENSION]

ICELAND'S VOLCANIC NORTHEAST

3 DAYS/2 NIGHTS | FROM \$3,550 PER PERSON, DOUBLE OCCUPANCY

Hike through the lava field stacks and venture into the caves of Dimmuborgir and walk along the black sand of Hverfjall Crater on an exploration of the volcanic Lake Mývatn region. Hear the thundering roar of Iceland's largest waterfall and hike the photogenic horseshoeshaped Ásbyrgi canyon. Soak in two different geothermal spas.

ADD IT BEFORE > *Iceland and Greenland: Edge of the Arctic.*

ADD IT AFTER > *Wild Iceland Escape or Iceland's Wild West Coast.*



PRE/POST-NORWAY/GREENLAND

PEAK EXPERIENCES IN ICELAND AND NORWAY

Make the most of your proximity and make big checks on your life-list.

[PRE- OR POST-VOYAGE EXTENSION]

ICELAND'S NATURAL WONDERS

4 DAYS/4 NIGHTS | FROM \$5,650 PER PERSON, DOUBLE OCCUPANCY

Explore bubbling mud pools, spouting geysers, and the world-famous Goðafoss waterfall in the north of Iceland. Luxuriate in the famous Blue Lagoon hot springs. And get to know the intimate yet cosmopolitan city of Reykjavík.

ADD IT BEFORE > *Fabled Lands of the North.*

ADD IT AFTER > *Land of the Ice Bears; East Greenland or Norway's Fjords and Arctic Svalbard.*

[PRE- OR POST-VOYAGE EXTENSION]

NORWEGIAN FJORDS

5 DAYS/5 NIGHTS | FROM \$4,680 PER PERSON, DOUBLE OCCUPANCY

A life-list must, add an exploration of Norway's iconic coastline to your adventures. Thundering waterfalls and snowy peaks offer wonderful photo ops. Take a thrilling ride on the Flâm railway, traveling through spectacular scenery.

ADD IT BEFORE > *Land of the Ice Bears; Coastal Wonders of Norway, The Faroe Islands & Iceland; East Greenland; Norwegian Discovery, Legendary Northern Isles: Scotland, Faroes & Iceland or Northeast Passage.*

ADD IT AFTER > *Northeast Passage*





POST-CANADA

A LODGE SEEMINGLY PERCHED AT THE EARTH'S EDGE

Immerse yourself in the elements and discover a wild place unlike any other.

[POST-VOYAGE EXTENSION]

FOGO ISLAND INN

5 DAYS/4 NIGHTS | FROM \$6,990 PER PERSON,
DOUBLE OCCUPANCY

Take in the untamed wilderness of the coast of Newfoundland Experience its soulful surroundings—savoring superb meals featuring local ingredients, meeting local artists, picking berries on scenic hikes, and getting acquainted with the infectious hospitality of this community.

ADD IT AFTER > *The Canadian Maritimes and Newfoundland.*

PRE-NORWAY

WHERE THE PAST IS ALWAYS PRESENT

Explore an iconic coast and discover highlands and islands steeped in myth and mystery.

[PRE-VOYAGE EXTENSION]

BERGEN

1 DAY/1 NIGHT | FROM \$1,190 PER PERSON,
DOUBLE OCCUPANCY

Explore this once bustling seaport town situated between fjords in southwestern Norway. Bergen is at once modern and medieval, and the Hanseatic League's influence is still evident in its colorful wooden clapboard wharf. Tour the waterfront, the Maritime Museum, and dine atop Fløyen Mountain with panoramic views.

ADD IT BEFORE > *Legendary Northern Isles or Norway's Fjords & Arctic Svalbard.*



PRE/POST-RUSSIA

IDYLIC LODGES NESTLED IN THE ALASKAN WILDERNESS

Stop, sit, and stay awhile in these wild outposts to luxuriate in pure Alaska.

[PRE- OR POST-VOYAGE EXTENSION]

ALASKA'S TUTKA BAY LODGE

5 DAYS/4 NIGHTS | CALL FOR PRICING.

Nestled among old-growth Sitka spruce on the shore of Kachemak Bay, use Tutka Bay Lodge as your base for daily adventures. Visit an oyster farm, go deep-sea fishing, see one of the most populated wild habitats of Alaskan brown bears. Hike to the spectacular Grewingk Glacier and along the lake edge, and enjoy superb meals throughout.

ADD IT BEFORE > *Exploring Russia's Far East & Wrangel Island; Northeast Passage or Along the Ring of Fire: Kamchatka, Kuril Islands & Hokkaido.*

ADD IT AFTER > *Northeast Passage; Northwest Passage or Exploring Russia's Far East & Wrangel Island.*

[PRE- OR POST-VOYAGE EXTENSION]

WINTERLAKE LODGE

5 DAYS/4 NIGHTS | CALL FOR PRICING.

Venture by floatplane to the remote Winterlake lodge. Nestled in the forest at the lake's edge and perched at the entrance to the Alaska range, it will be your basecamp for exploring the glaciers, Tordrillo Mountains, and the Skwentna River Valley on foot, by helicopter, and whitewater raft.

ADD IT BEFORE > *Northeast Passage or Along the Ring of Fire: Kamchatka, Kuril Islands & Hokkaido.*

ADD IT AFTER > *Northeast Passage; Along the Ring of Fire: Kamchatka, Kuril Islands & Hokkaido or Northwest Passage.*



TRUE TASTES OF THE ARCTIC





THE APPROACH TO DINING ON OUR FLEET OF ships is innovative and adventurous. Immerse yourself in your voyage by way of taste and gastronomic experiences. In keeping with the spirit of sustainability and self-reliance that dominates the region, meals feature extraordinary examples of Arctic cuisine.

Imagine a traditional breakfast of Brunost, a dense caramelized goat's milk cheese, thinly sliced over rye toast, or Filmjök, a Nordic fermented dairy product much like Greek yogurt, served with crisp waffles and preserved

cloudberries or sea buckthorn, hand-picked from the high Arctic mountains. Dinner features local specialties—think reindeer casserole or stew, flavored with juniper berries and rosemary, and filled with hearty root vegetables, mushrooms, and cream. “At dinner, it’s served with potato purée and lingonberry,” explains Sara Henstam, chef of the *National Geographic Explorer*, “but for afternoon tea, I serve it in soft flat, thin bread. The guests really love it.” All are paired with our wine steward’s choice of European wines, or beer, including local selections.



NATIONAL GEOGRAPHIC EXPLORER

CAPACITY: 148 guests in 81 outside cabins.

REGISTRY: Bahamas. **OVERALL LENGTH:** 367 feet.

National Geographic Explorer is a state-of-the-art expedition ship. It is a fully stabilized, ice-class vessel, with an ice-reinforced hull, enabling it to navigate polar passages while providing exceptional comfort. It carries kayaks and a fleet of Zodiac landing craft. An undersea specialist operates a remotely operated vehicle (ROV) and sophisticated video equipment, extending access to the underwater world.

PUBLIC AREAS: Bistro bar; chart room; restaurant; global gallery; library; lounge with full service bar and state-of-the-art facilities for films, slideshows and presentations; mudroom with lockers for expedition gear, and observation lounge. Our “open Bridge” provides guests an opportunity to meet our officers and Captain and learn about navigation.

MEALS: Served in single seatings with unassigned tables for an informal atmosphere and easy mingling. Menu is international with local flair.

CABINS: All cabins face outside with windows or portholes, private facilities and climate controls. Some cabins have balconies. Cabins are equipped with Ethernet and Wi-Fi connections and USB ports for mobile devices.

EXPEDITION EQUIPMENT: Zodiac landing craft, kayaks, Remotely Operated Vehicle (ROV), hydrophone, splash-cam, underwater video camera, aerial remote controlled camera and video microscope.

SPECIAL FEATURES: A full-time doctor, undersea specialist, National Geographic photographer, Lindblad-National Geographic certified photo instructor and video chronicler, internet café and laundry.

WELLNESS: The vessel is staffed by a wellness specialist and features a glass-enclosed fitness center, outdoor stretching area, a LEXspa treatment room and sauna.



From top: the dining room has unassigned seating and an informal atmosphere; glass-enclosed fitness center with 180 degree views.



Clockwise from left: expansive veranda deck, perfect for outdoor barbecues and sunset viewing; Category 7 suite; standard cabin.

CATEGORY 1: Main Deck with one or two portholes #301-308

CATEGORY 2: Main Deck with window #317-320, 335-336

CATEGORY 3: Main Deck with window #313-316, 321-328, 337-340, 342, 344, 346, 348, 350

CATEGORY 4: Upper and Veranda Decks with window #103-104, 107-108, 201-202, 204-207, 210, 212, 217, 226, 228

CATEGORY 5: Upper Deck with balcony #209, 211, 214, 216, 218, 220-222, 224

CATEGORY 6: Veranda Deck–Suite #101-102; Upper Deck–Suite with balcony #213

CATEGORY 7: Upper Deck–Suite with balcony #215, 219, 230

CATEGORY A SOLO: Main Deck with window #309-312, 329-334

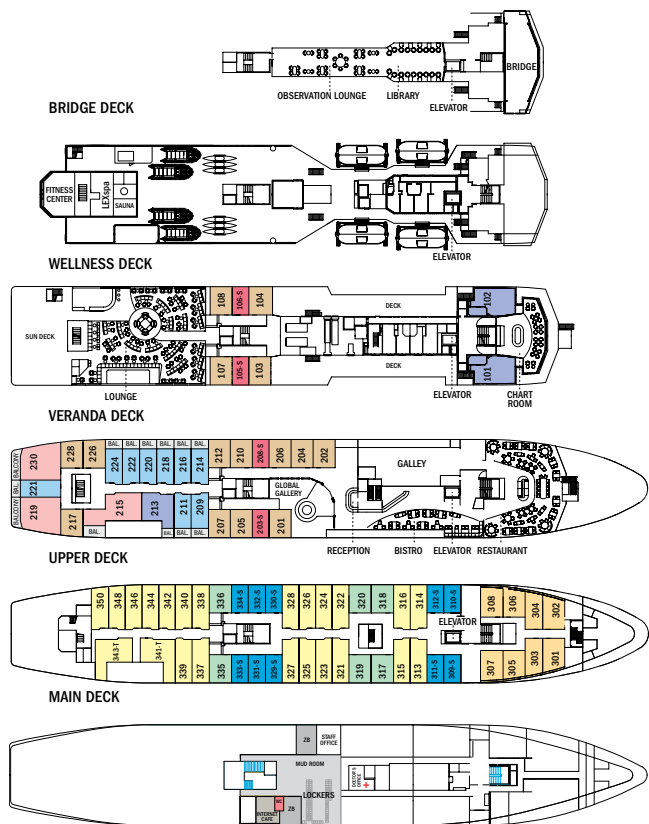
CATEGORY B SOLO: Upper and Veranda Decks with window #105-106, 203, 208

CATEGORY 3 TRIPLE: Main Deck with window #341, 343

SHARED ACCOMMODATIONS: Available in Categories 1 and 2.

SOLO OCCUPANCY: Cabins available in Categories A and B.

NOTE: Cabins #209, 211, 214, 216-218, 220, 222, 224, 226, 228, 303-306—These cabins have one queen-sized bed. All other double cabins have two lower single beds; some can convert to a queen-sized bed. Third person rates are available in the designated triple occupancy cabins at one-half the double occupancy rate. Cabins #341, 343, 101, 102, 215, 219 and 230 can accommodate a third person.



SEE MORE ONLINE: Learn more about *National Geographic Explorer* at expeditions.com/explorer



NATIONAL GEOGRAPHIC ENDURANCE & NATIONAL GEOGRAPHIC RESOLUTION

CAPACITY: 126 guests in 69 outside cabins.

REGISTRY: Bahamas. **OVERALL LENGTH:** 406 feet.

National Geographic Endurance and *National Geographic Resolution* are next-generation expedition ships, purpose-built for polar navigation. Fully stabilized, highly strengthened, ice-class Polar Code PC5 (Category A) vessels, they are designed to navigate polar passages year-round, and safely explore uncharted waters, while providing exceptional comfort. The patented X-bow® is key to their design; its powerful wave-slicing action provides an extremely smooth ride even in adverse conditions, and even reduces spray on deck for superior observation. They carry a full suite of expedition tools, and offer a variety of experience enhancing amenities.

PUBLIC AREAS: Two restaurants, a chef's table for small group dining, observation lounge with bar, gym, wellness area, infinity-style outdoor hot tubs, library, main lounge with full service bar, 24-hour beverage, state-of-the-art facilities for films, slideshows and presentations, and a photo workshop area; plus, an expedition base with lockers for expedition gear, and an "open Bridge" for access to our Captain, officers and the art of navigation.

MEALS: Two restaurants, featuring local, sustainable choices and unassigned seating for flexible, inclusive dining; plus a Chef's table for intimate, small group dining. Main restaurant has 270° views, and the Observation deck restaurant features lighter, made-to-order fare.

CABINS: All cabins face outside with large windows, private facilities and climate controls. 53 cabins have balconies. Cabins are equipped with expedition command centers with tablets and USB/mobile device docking, TVs, Wi-Fi connections, and hair dryers.

EXPEDITION TOOLS: Zodiac landing craft, kayaks, snowshoes, cross-country skis, undersea specialist operating a remotely Operated Vehicle (ROV) and underwater video camera for unique access to polar marine world, hydrophone, aerial remote-controlled camera and video microscope.

SPECIAL FEATURES: A full-time doctor, undersea specialist, National Geographic photographer, Lindblad-National Geographic certified photo instructor and video chronicler, an internet cafe and laundry.

WELLNESS: The vessel is staffed by our wellness specialists and features a glass-enclosed yoga studio, gym, treatment rooms and spa relax area, and high- and low-heat saunas with ocean views.



From top: spacious bathroom;
expedition command center



Clockwise from left: Two Seven Zero® restaurant; standard cabin; suite with balcony.

CATEGORY 1: Fore Deck with two large windows, alcove seating, relax chair #406, 408, 411, 413, 415

CATEGORY 2: Fore Deck with two large windows, alcove seating, relax chair #410, 412, 414, 416-419, 421-427

CATEGORY 3: Main Deck—Suite with balcony and sofa #512-524

CATEGORY 4: Lounge Deck—Suite with balcony and sofa #608, 610, 612, 613-623

CATEGORY 5: Bridge Deck—Suite with balcony and sofa #708, 709, 711, 713

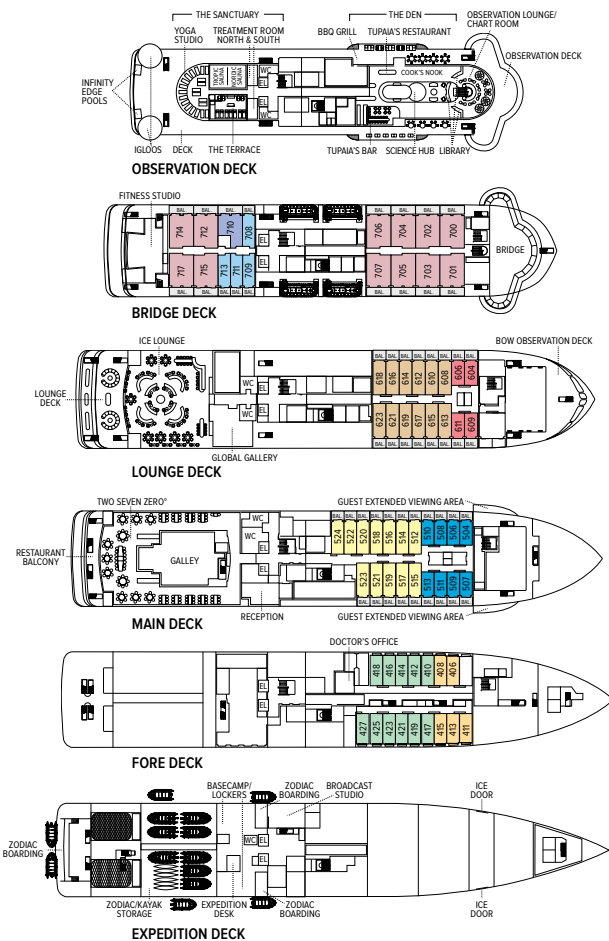
CATEGORY 6: Bridge Deck—Junior Balcony Suite with large balcony, sofa bed #710

CATEGORY 7: Bridge Deck—Large Balcony Suite with large balcony, sofa bed, bathtub, walk-in closet #700-707, 712, 714-717

CATEGORY A SOLO: Main Deck—Suite with balcony #504-510, 513

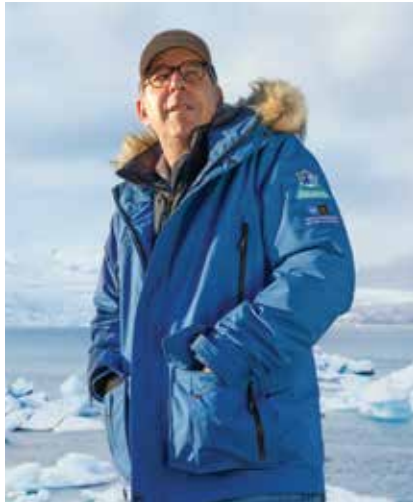
CATEGORY B SOLO: Lounge Deck—Suite with balcony #604, 606, 609, 611

All cabins have: Ability to set up as queen or two twins, command center with docking for multiple devices, atlas, clock, barometer, TV, phone, digital tablet for onboard info, hair dryer, safe, refrigerator.



SEE MORE ONLINE: Learn more about *National Geographic Endurance* at expeditions.com/endurance and *National Geographic Resolution* at expeditions.com/resolution

NEW! ARCTIC PARKA AND JACKET



We are excited to share our new parka and jacket designs for our Arctic and sub-Arctic expeditions. Based on our coveted Antarctica parka, we designed a vintage look and feel with contemporary tech details for maximum polar functionality and comfort. Our jacket, for the balmier climes, is a wind

and waterproof shell that is super sleek. Information about which option is available to you can be found in your online documents portal along with sizing.



BE PART OF OUR EXPEDITION COMMUNITY

Join in! Here's how:

- Check our blog for interesting posts, video clips and Photos of The Week: expeditions.com/blog
- Like us on Facebook: hear what our travelers have to say, get inspired and chime in: facebook.com/LindbladExpeditions
- Preview an expedition before you go or subscribe to our videos on youtube.com/lindbladexpeditions
- Follow us [@LindbladExp](https://twitter.com/LindbladExp) and our founder, Sven Lindblad [@SvenLEX](https://twitter.com/SvenLEX), on Twitter; and on Instagram [@SOLindblad](https://instagram.com/SOLindblad) for his interesting view of the world.



SELF-DISINFECTING SHIPS



Lindblad Expeditions became the first self-disinfecting fleet with the rollout of the ACT CleanCoat™ system in 2019. This photocatalytic cleaning process activates when illuminated, continuously breaking down unwanted microbes such as bacteria, viruses, mold, and

airborne allergens. The positive environmental impacts of this non-toxic, chemical-free system are many: less plastic in the supply chain and waste stream, and more than one million gallons of water saved annually. The system lowers our carbon footprint and creates a cleaner, healthier shipboard environment for guests and crew alike. personal nature—internet usage, wellness treatments, and other specialized arrangements.

Photo Credits: Alyssa Adler, All Canada Photos/Alamy, ARCTIC IMAGES/Alamy, BIOSPHOTO/Alamy, Barrett & MacKay Photo, Sisse Brimberg & Cotton Coulson, Cavan Images/Alamy, Stewart Cohen, David Cothran, Danita Delimont/Alamy, Eric Guth, Olivind Haug, James Hyde, Francois Lebeau, Ralph Lee Hopkins, Johner Images/Alamy, istock, Dagný Ívarsdóttir, Ivan Kmit/Alamy, Albert Knapp/Alamy, Olga Miltsova/Alamy, Emily Mount, Michael S. Nolan, Andrew Peacock, Rich Reid, Marco Ricca, Susan Seubert, Shutterstock, David Spiegel, Alexey Stiop, David Vargas, Barbara Vasquez.

TAKE ADVANTAGE OF OUR SPECIAL OFFERS

WITH COMPLIMENTS: We will cover your bar tab and tips to the ship's crew on all departures aboard *National Geographic Endurance*, *National Geographic Resolution*, and *National Geographic Explorer*.

BE OUR GUEST IN ALASKA: Receive complimentary pre- or post voyage hotel night at the Hilton Downtown Anchorage on select 2022 departures aboard *National Geographic Endurance* and *National Geographic Resolution*.

TRAVELING AS A GROUP: Book a group of six or more on select departures of our Wild Escapes itineraries and save 10%. On all other departures, save 5% when traveling as a group of eight or more. Take advantage of these great savings, while enjoying traveling with your friends and family. This savings is applicable to voyage fares only and is not valid on extensions or airfare and may not be combinable with other discounts. Deposit, final payments, and cancellation policies for group travel vary from our regular policies.



RESERVATION INFORMATION

Terms & Conditions: For complete terms and conditions please visit expeditions.com/terms

Pricing: For best pricing book early. Prices quoted in this brochure are valid as of the time of printing, are subject to modification based on select departures and availability at time of booking, and are not guaranteed until booking and required deposit is made. Under normal conditions, the total expedition price is guaranteed at the time of booking. However, our expedition pricing is determined far in advance of initial departure on the basis of then-existing projections of fuel and other costs. In the event of increases in those costs including, but not limited to, increases in the price of fuel, currency fluctuations, increases in government taxes or levies, or increased security costs, we reserve the right to adjust the price of your expedition or add a surcharge to cover such unexpected increases. We will always provide an explanation of the reason for increase in pricing. Visit expeditions.com or call for the most up-to-date pricing.

Pricing Includes: All accommodations aboard ship or in hotels per itinerary or similar; all meals and beverages aboard ship (except certain super-premium brands of alcohol); meals on land as indicated, accompanied by nonalcoholic beverages; shore excursions; sightseeing and entrance fees; special access permits; transfers to and from group flights; use of kayaks; use of cross-country skis or snowshoes (where applicable); tips (including gratuities to ship's crew); taxes and service charges; services of a ship physician and services of our expedition staff. Unused services or items included in our programs are non-refundable.

Not Included: Air transportation, charter airfare (where applicable) extensions, passport, visa, immigration fees, meals not indicated, travel protection plan, items of a personal nature, such as internet access, voyage chronicle, and laundry.

Airfare: For all programs, airfare is an additional cost unless otherwise indicated. We will gladly assist in making your air arrangements for a \$50 per person service fee.

Reservations: To reserve your place, an advance payment is required at the time of reservation. Receipt of advance payment indicates your acceptance of the terms and conditions. Visit expeditions.com/terms for complete details.

Final Payment: Final payment is due in full 120 days prior to departure. Payment schedules may vary for certain longer voyages due to high demand for these voyages. We reserve the right to cancel your reservation if payment has not been received by final payment due date.

Travel Protection Plan: We strongly recommend that you take advantage of our Travel Protection Plan. This plan offers comprehensive coverage to protect you from cancellation fees, costs incurred due to trip delays/interruption, medical assistance,

and damaged or lost baggage, and provides medical assistance and evacuation during your travels. Our Travel Protection Plan is available for U.S. residents only and may be purchased any time prior to final payment due date.

If you are not satisfied for any reason, you may return your plan within 10 days after purchase. Your premium will be refunded if canceled within 10 days, provided you have not already departed on the trip or filed a claim. When so returned, the coverage under the plan is void from the original date of purchase.

Responsibility and Other Terms & Conditions: Certain provisions concerning, among other things, limitations of Lindblad Expeditions' and National Geographic Expeditions' (a division of National Geographic Partners, LLC) liability for loss of property, injury, illness, or death during the voyage will be provided to all guests on the ship's ticket sent prior to departure, and are also available on our website at expeditions.com/terms, or upon request. By registering for a trip, the guest agrees to all such terms and conditions.

Note: Itineraries and prices listed in this brochure are as of publication date and are subject to change.

Smoking and Vaping Policy: Smoking and Vaping are allowed only in designated outdoor areas.

Cancellation Policy: Call for details or visit expeditions.com/book-assured

©2021 Lindblad Expeditions

Lindblad Expeditions and the Eye are the trademarks of Lindblad Expeditions. All rights reserved. NATIONAL GEOGRAPHIC and the Yellow Border are the trademarks of the National Geographic Society. All rights reserved.

For Reservations:

Contact your travel advisor or Lindblad Expeditions

1.800.EXPEDITION (1.800.397.3348)

Reservation Hours: Monday – Friday 9am – 9pm ET

Saturday & Sunday 10am – 5pm ET

Lindblad Expeditions, Inc., 96 Morton Street, New York, NY 10014

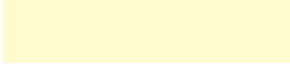
Phone: 212.261.9000 • Fax: 212.265.3770

For additional information and online reservations, visit us at: expeditions.com


96 MORTON STREET, NEW YORK, NY 10014

PRSRST STD
U.S. POSTAGE
PAID
LINDBLAD
EXPEDITIONS

Account Number:



1.800.EXPEDITION | WWW.EXPEDITIONS.COM

 Printed on 10% recycled content paper with soy-based inks. We recommend that you pass this along for others to enjoy or recycle.

ARC-111

